

A 700-year history

• Wars between Dauphiné and Savoy



The château des Allymes was born from the struggles between Dauphiné and Savoy.

The military fort was erected between 1312 and 1318 on the heights of Ambérieu-en-Bugey by the dauphin of Viennois in retaliation to the building of a fortification on the mount Luisandre by his enemy, the count of Savoy, located just opposite to the fort of Allymes.

As a result of one of the numerous treaties that end temporarily conflicts, the fortress of Allymes hands to the House of Savoy in 1335.

• 250 years of a savoyard life



The fortress is now playing a supporting role. Furthermore, both States haven't resolved all their old quarrels.

Dauphiné and Savoy are still experiencing the final jolts of the war. In 1355, the treaty of Paris finally restores peace and the Rhône marks the new border between Dauphiné, which became french in 1349, and Savoy.

The fort of Allymes loses its strategic interest. Amédée VI, count of Savoy, confers its possession to sieur Nicod François, his treasurer, who becomes the first lord of the castle of Allymes on july 1354.

• Attachment to France in 1601 René de Lucinge, the diplomat



During the Renaissance, the castle of Allymes comes back to the front. Indeed, an illustrious figure from the end of the 16th century, René de Lucinge (1553-1624), lord of the Allymes, famous humanist, diplomat for the duke of Savoy, is one of the negotiators of the Treaty of Lyon that he co-signs in 1601. This treaty acknowledges the attachment of the Pays de l'Ain (Bugey, Bresse, Valromey & Pays de Gex) to France.

In his memory, for more than 60 years, the society of Amis du Château des Allymes et de René de Lucinge ensures the public opening of the castle.



WE SPEAK ENGLISH

Open all year long

Information available on our website
www.allymes.net

You can download our audioguide in English from izi.TRAVEL app



PRACTICAL INFORMATION



CALL US

04 74 38 06 07



ADDRESS

Brey-de-Vent
01500 Ambérieu-en-Bugey

15 min far from downtown, then
10 min' walk from the car park



E-MAIL

lesallymes@wanadoo.fr



WEB

www.allymes.net

Follow us on :



CATERING

04 74 38 46 60

Amitchi : pizza - bistro - grocery store
below the castle in Brey-de-Vent

ACCOMMODATION

04 74 38 64 94



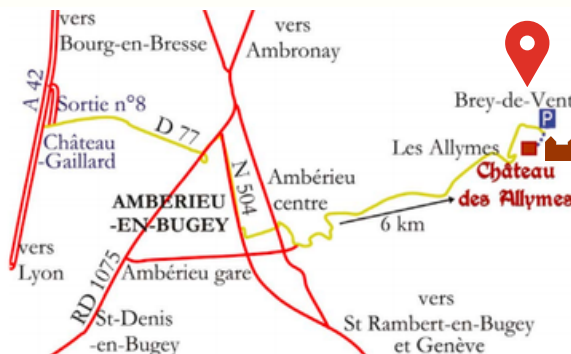
The Gîte des Allymes welcomes you
at the hamlet of Brey-de-Vent



NATURE ESCAPE

Enjoy the numerous hiking
trails starting from the
hamlet of Brey-de-Vent

ACCESS MAP



GPS Car Park : 45.9756 | 5.4127

- 1 hr far from Lyon, Geneva, Mâcon / A 42 exit n°8
- 1.5 hr far from Chambéry, Grenoble, Annecy
- 45 min far from Bourg-en-Bresse
- 15 min far from Ambérieu downtown



CHÂTEAU DES ALLYMES



Ambérieu-en-Bugey

*A medieval treasure in the department of Ain
halfway between Lyon and Geneva*

OPEN all year long

In Summer: from 10 am to 12:30 pm & from 1:30 pm to 7 pm everyday



EVERYDAY from april to october
and during the zone A school holidays

EVERY WEDNESDAY & WE from november to march
(Detailed schedule on www.allymes.net)

OUR TOURS

SELF-GUIDED TOURS

Free access to the inside of the castle

Rates

6 € (adults)
3 € (4-18 yrs)
Free children under 4



GUIDED TOURS

By booking

from april to october

1 hr and 1.5 hr tours
leading to
the terrace of the keep
(from the age of 8)

Contact us !



FREE AUDIOGUIDE

from izi.TRAVEL app

Download the audioguide
BEFORE COMING
(the castle is in a "white spot")



SCAN ME !

OUR EXHIBITIONS

Permanent exhibitions

The whole history of the castle
between the 14th and 19th C
(Models of the surrounding castles, armour
hall, panels about René de Lucinge ...)

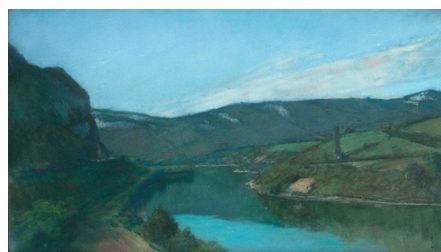


An impressive collection of
ancient european fortified
castles in toys dated between
1900 and 1960



Temporary exhibitions

Art Exhibitions - Photo Exhibitions



OUR EVENTS

STORYTELLING TOURS

For adults and children
fond of tales.

Follow our storytellers
that introduce you
to an original way to discover
or rediscover the castle



CONCERTS CONFERENCES

A cultural agenda
is proposed

More information on
www.allymes.net



MIDDLE AGES WITH TOYS

Each year, dioramas with
Lego® et Playmobil® toys
figurines from
private collections
are shown with a
different medieval focus

with the kind permission of PLAYMOBIL® France
This exhibition is neither organized nor sponsored by PLAYMOBIL®



Means of payment :

Credit Card- Holiday vouchers - Cash - Checks

Look forward our regularly updated programming
on our website (www.allymes.net) and our social networks